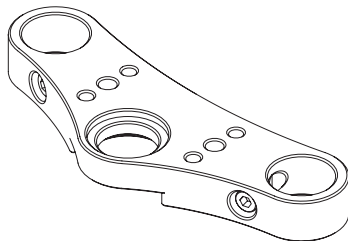


INSTALLATION MANUAL

Thank you for buying this triple tree clamp made by rebelmoto.



The triple tree clamp in the box may be different to the one illustrated above.

Disclaimer

Rebelmoto accepts no liability for damage, injury or any legal responsibility incurred directly or indirectly from the use or installation of this product. The use and installation of this product is at user's own risk.

Installation

For the triple tree clamp called "Scram" by rebelmoto, it can be an advantage to mount the risers on the triple tree clamp before installing it.

Insert the two stainless steel fork locks into the front of the triple tree clamp and carefully slide it over the forks.

Once the triple tree is in place tighten the two M8 bolts and screw on the center nut.

